



DYNASTY **SPAS**

Vacation Collection



BIMINI 2

Size: 72" x 72" x 33.5"
Jets: 21 Orion SS Jets
Gallons: 160



TREASURE CAY 5

Size: 78" x 78" x 36"
Jets: 30 Orion SS Jets
Gallons: 280



SUNSET COVE 3

Size: 60" x 82.5 x 33.5"
Jets: 36 Orion SS Jets
Gallons: 160



TRANQUILITY HARBOR 7

Size: 82" x 82" x 39"
Jets: 42 Orion SS Jets
Gallons: 295



SERENITY COVE 5

Size: 82" x 82" x 39"
Jets: 42 Orion SS Jets
Gallons: 295



OCEAN BREEZE 7

Size: 92" x 92" x 39"
Jets: 42 Orion SS Jets
Gallons: 425



CABANA BAY 5

Size: 92" x 92 x 39"
Jets: 42 Orion SS Jets
Gallons: 425



THE MOST COMFORTABLE SPA.
MADE IN THE USA.



AQUAKINETIC® HYDROTHERAPY - JET SYSTEM (Jet Styles, Colors, LED, and Sizes May Vary.)



DIRECTIONAL STATION
Relieves muscle tension and improves blood circulation its spiral action provides a vigorous massage.



VORTEX STATION
Stimulated the body's smallest points of energy.



TUINA STATION
Direct a vigorous water flow along with the meridian lines. Inspired by Chinese massage. (Offered on certain models only)



FOOT MASSAGE
A large concentration of nerve endings are located in the feet. Enjoy the soothing effect of a foot massage, wherever you choose to sit in your hot tub.



SHIATSU STATION
Much like a finger, hand and elbow shiatsu massage, this station can offer both a soft, relaxing flow or a vigorous pulsating purpose.



ROTARY SHOWER
Powerful jets that you can place your legs over for a strong massage effect they are great for post recovery after a strenuous activity.

- The oversized jets and the fusion of air and water double the force of the jet to offer a more complete massage.

- Jet placement targets major muscle groups for fast pain and stress relief

- Independently adjustable, screw-in jets allow you to customize the jet Action.

- Diverter controls allow the user to Adjust the amount of water pressure to each seat

- Varieties of massage vortex, tuina, Shiatsu, rotary, directional and foot massage.

STANDARD FEATURES (Illumination Varies)



506 Topside Control



Under Light



Adjustable Jets



Water Features

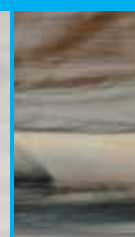
INSULATION



ACRYLIC COLOR OPTIONS



Sterling
Marble



Tuscan
Sun



Storm
Cloud

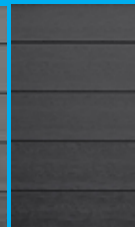


Smokey
Mountains

SKIRTING COLOR OPTIONS



Gray
Standard



Black
Standard



Coastal
Upgrade



Ash
Upgrade

OPTIONAL FEATURES

IN.TOUCH2® WI-FI REMOTE

Standard on 11' Family Island Oasis
Control all functions of your spa from your iOS or Android smartphone or tablet and the Intouch.2® app. Use predefined spa experiences or customize your own.



Available on the App Store

GET IT ON Google Play



IN.MIX, LED CONTROLS



Stunning underwater light shows can do more than further enrich your soak, they can define your spa environment. They can change the mood from a party atmosphere to a romantic setting, as well as an added safety feature after dark. The in.Mix adjustable and independent zone LED lighting system provides 113 points of light that glows from the footwell up to the spa lip and controls. The visual delight of water shooting through a beautiful spectrum of color adds unique charm to your soak.

IN.STREAM 2, INTEGRATED BLUETOOTH™ AUDIO SYSTEM

Not available on Bimini, Treasure Cay and Sunset Cove



Streamed from your spa, your favorite music never sounded so good! in.stream 2 audio station is a compact, rugged and splash proof all in one outdoor audio system that delivers an awesome sound quality through Class D amplifier technology to enhance your backyard audio experience. It comes with an in.p4 docking station that connects, protects and lets you control your audio player or smartphone directly from your spa keypad.

FEATURES 4 TYPES OF AUDIO SOURCES:
AUX, USB, FM, AND BLUETOOTH.

